

Transport Carbon IntenCities (TraCit) Workshop, 12th November, 2010.

Princess Royal Gallery, Royal Naval Museum, Portsmouth Historic Dockyard

CURe University of Portsmouth

Economic growth and reducing emission are key goals of policy makers around the world. These two goals could be considered contradictory given the long established links between economic growth and growth in carbon intensive transport. The **TraCit** project seeks to investigate ways in which these links can be broken down. Working in collaboration with academic, municipal and industrial partners from here in the South of England, Estonia and Malopolska the TraCit project aims to share knowledge and best practice to facilitate partner regions in implementing appropriate policies and projects to reduce energy and carbon intensive travel while at the same time supporting development and economic growth. A varied selection of interventions will form the basis of case studies in each region, ranging from cycling infrastructure schemes, educational programmes to urban planning as possible tools to aid decoupling.



Outline programme

- 9:00 – **Arrival and Registration
Tea and Coffee**
- 9:30 – **Welcome to the University & City**
Councillor Gerald Vernon-Jackson
Leader of Portsmouth City Council.
- 9:45 – **Opening Address**
Catherine Teeling, Department of
Architecture, Lee Woods, School of
Civil Engineering and Surveying,
UoP. **TraCit** Project coordinators.
- 10:00 – **Tracit Project Overview**
Dr Graham Wall,
Portsmouth University.
- 10:15 – **Land Use Transport Models and
Carbon Intensity**
David Simmonds, Director of David
Simmonds Consultancy.
- 10:40 – **Results of the SOLUTIONS Project**
Prof Marcial Echenique, Professor
of Land Use and Transport Studies,
University of Cambridge.
- 11.05 – **Behavioural Change**
Bob Pinkett
Director Peter Brett Associates
- 11:30 – **Questions**
- 11:45 – **Tea & Coffee**
- 12:00 – **Shared Space: Reconciling People,
Places and Traffic**
Ben Hamilton-Baillie, Hamilton
Baillie Associates.

12:20– **Cycling and Carbon Reduction**
Neil Guthrie, Consultant, WS Atkins.

12:40– **Smarter Choices and Carbon Reduction**
Andy Wren, Transport Planning and Policy Manager, Hampshire County Council

13:00 – **The Big Green Commuter Challenge**
Amanda Morris, Travel Plan Officer, Portsmouth City Council

13:20 – **Questions**

13:30 – **Lunch**

14:15 – **Seminar Sessions**

Seminar 1 - Carbon Audit and Metrics in Practice

Chair: Lee Woods

Seminar 2 - Economic Impacts of Transport Interventions

Chair: Prof. Alan Collins

Seminar 3 - Policy and Strategy

Chair: Robert Ravelli
(Contemporary Transport)

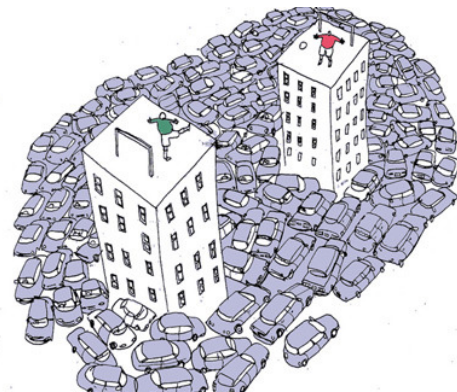
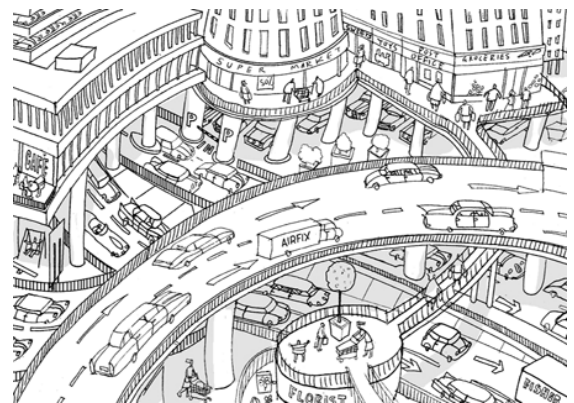
Seminar 4 - Behavioural Change

Chair: Bob Pinkett
(Peter Brett Associates.)

15:30 – **Feedback from Seminars**

16:30 – **Conclusions and Closing Address**
Simon Claridge, Dean of CCI.

17:00 – **Drinks**



Booking

Places are limited to this free event; if you are interested in attending the **TraCit** Workshop please send the attached expression of interest form to TraCit@port.ac.uk

Location: <http://www.historicdockyard.co.uk/dockyard/>

Images courtesy of Ben Hamilton Baillie & Freiburg City Council



POWER
Low Carbon Economies



European Union
European Regional Development Fund



INTERREG IVC
INNOVATION & ENVIRONMENT
REGIONS OF EUROPE SHARING SOLUTIONS